



Industrial Thermostat Options for Assemblies

We use industrial thermostats to build assemblies for use in more complex devices. Select from value-added services such as adding wire leads, building enclosures, or potting services to ensure your product's success.

For more information and to start your next project, contact us today:

- www.decamanufacturing.com
- Call: 419-884-0071

GT Series, Ceramic Disc Thermostats

DECA Manufacturing offers the GT line of 1/2" disc fixed temperature thermostats. Approved by numerous testing agencies, all GT thermostats pass a series of rigorous quality control checks including continuity, function, contact resistance and dielectric strength. Excellent multipurpose thermostat available in both automatic reset and push button manual reset configurations. A wide range of operating temperatures, as well as a small size and a variety of physical configurations, permit the flexibility to meet your specific needs.

Features

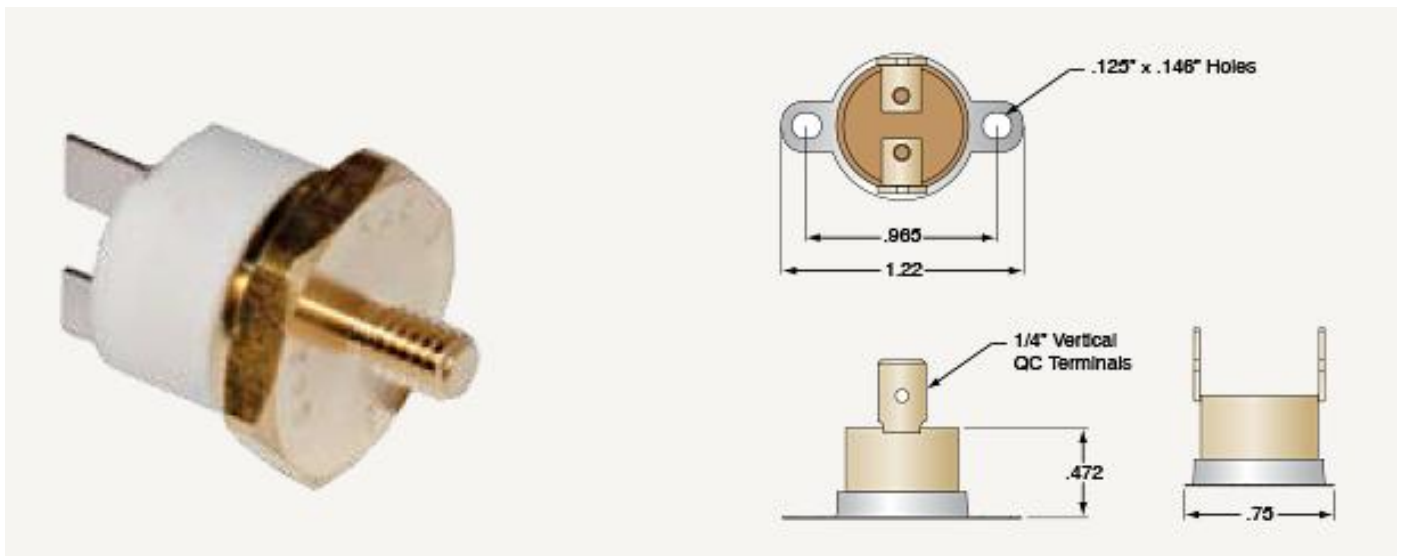
- Factory pre-set fixed temperature
- Normally open or normally closed contact configurations
- Current rating: to 15 Amp@ 120 Vac, 10 Amp@250 Vac
- Available temperatures from 0°C to 177°C
- Controlling or limit functionality
- Brass or stainless-steel construction
- Pressure ratings up to 7000 psi

Applications

- Food service equipment
- Mold platens
- Electric heaters
- Refrigerators and freezers
- Test pots & temperature control chamber
- Livestock warmers
- Agricultural equipment
- Environmental controls
- Vending machines
- Electric & gas ovens
- Automotive
- Hydraulics

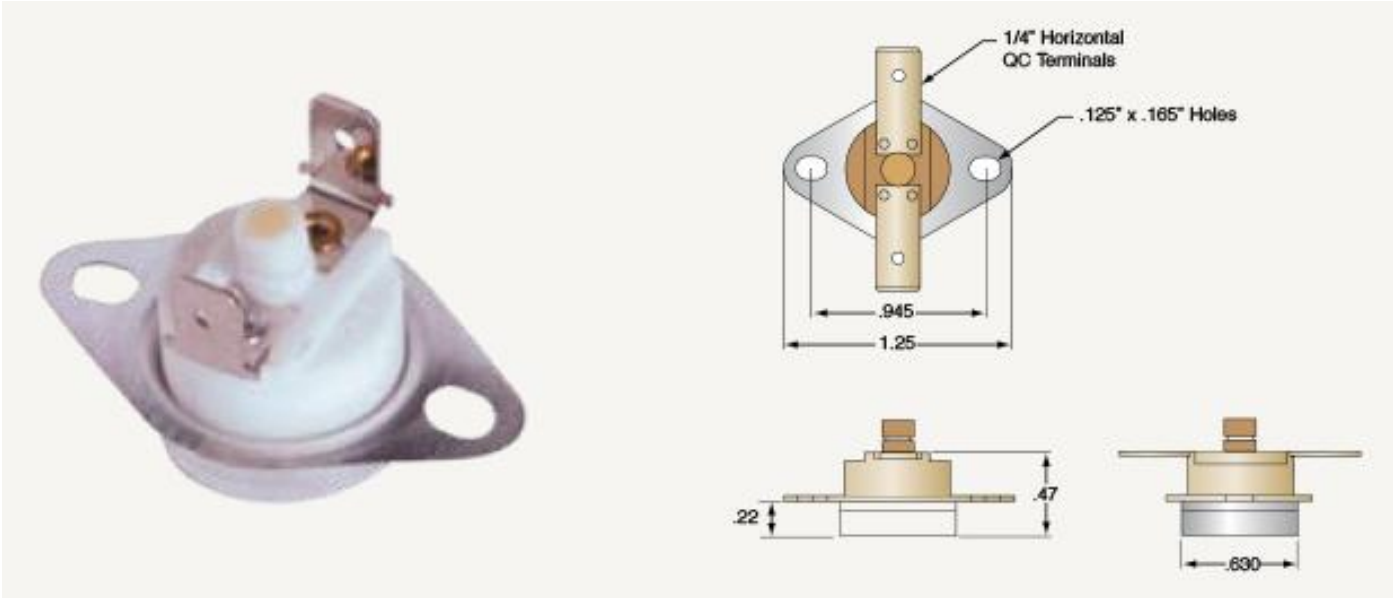
Auto Reset Construction

Options shown: Vertical 1/4" Q.C. Terminals and an 8-32 Stud Mount Cap



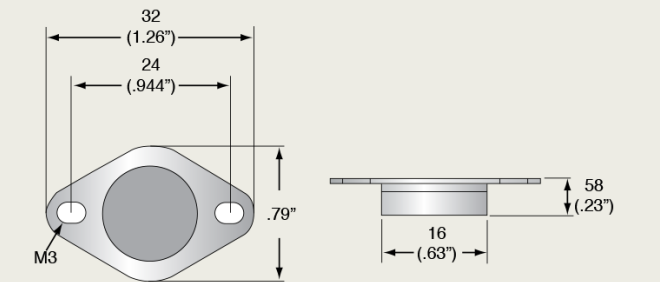
Manual Reset Construction

Options shown: Horizontal 1/4" Q.C. Terminals and Airstream Mount Flange

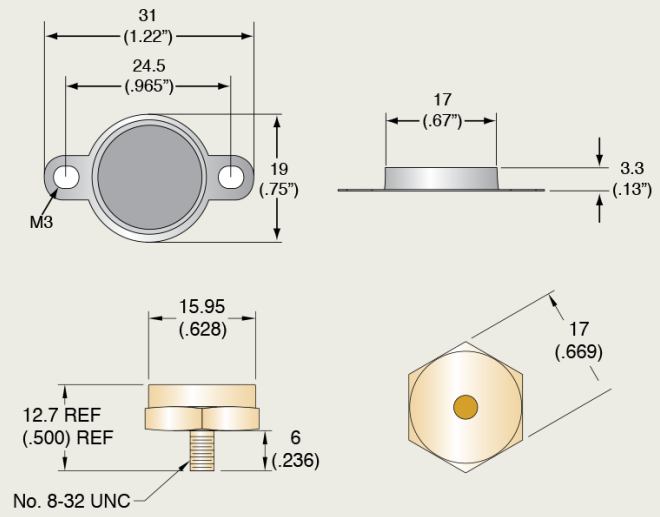


Mounting Options

Airstream Mount Flange Cup
Code: AM • Material: Aluminum



Loose Ear Surface Mount Flange
Code: SM • Material Aluminum



Electrical Ratings & Temperature Information

| Electrical Ratings and Selected Agency Approvals | | | | |
|--|-----------------|------------------------------------|-----------------|------------|
| Model Type | Cycles (X 1000) | Electrical Rating | Max. Temp. (°C) | Agency |
| GT52N | 100 | 120 Vac/15 Amps 240 Vac/10 Amps | 230°C | UL/CSA/VDE |
| GT52N | 30 | 120 Vac/15 Amps 240 Vac/10 Amps | 260°C | UL ONLY |
| GT52X | 30 | 120 Vac/0.5 Amps | 230°C | UL/CSA/VDE |
| GT52P | 100 | 42Vdc/0.2 Amps | 230°C | UL/CSA/VDE |
| GT15N | 6 | 120 Vac/15 Amps 240 Vac/10 Amps | 250°C | UL ONLY |

| Standard Tolerances: Manual Reset | | | |
|-----------------------------------|---------|----------------|---------|
| Set Temperature | | Open Tolerance | |
| °C | °F | °C | °F |
| 150-250 | 302-482 | +/-8.0 | +/-14.4 |

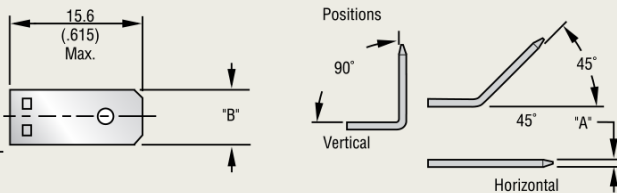
| Standard Temperature Differential and Tolerances: Automatic Reset | | | | | | | |
|---|---------|--------------|----|----------------|--------|-----------------|---------|
| Set Temperature | | Differential | | Open Tolerance | | Close Tolerance | |
| °C | °F | °C | °F | °C | °F | °C | °F |
| 150-260 | 301-446 | 25 | 45 | +/-5.0 | +/-9.0 | +/-7.0 | +/-11.0 |

Terminal Options

Quick Connects

Material: Brass, Tin Plated

| | 1/4" | 3/16" |
|----------------|------------|------------|
| Thickness (A): | 0.8 (.031) | 0.5 (.020) |
| Width (B): | 6.3 (.250) | 4.8 (.187) |
| Orientation | Codes | |
| Vertical | 4V | 3V |
| Horizontal | 4H | 3H |
| 45° | 4A | 3A |



All dimensions mm (in.)

Numbering System for Samples

| | | | | | | |
|--|---------------------------------|---|---------------------------------|----|----|-----|
| GT | 52 | N | L | 4V | SM | 165 |
| Contact Type | | | Terminal Options | | | |
| 52 | Automatic Reset | | 3/16" Quick Connects | | | |
| 15 | Manual Reset | | 3V Vertical | | | |
| Contact Material | | | 3H Horizontal | | | |
| | | | 3A 45° | | | |
| | | | 1/4" Quick Connects | | | |
| | | | 4V Vertical | | | |
| N | Silver Nickel Alloy | | 4H Horizontal | | | |
| P | Gold Platinum Silver | | 4A 45° | | | |
| X | Gold Platinum Silver | | Other terminal types available. | | | |
| Contact Configuration | | | | | | |
| L | Normally Closed, Open on Rise | | | | | |
| F | Normally Open, Close on Rise | | | | | |
| Mounting Options | | | | | | |
| FC | No Mounting Provision, Flat Cup | | | | | |
| AM | Airstream Mount Integral Flange | | | | | |
| SM | Surface Mount Flange, Loose Ear | | | | | |
| ST | 8-32 Stud Mount | | | | | |
| Other mounting types available. | | | | | | |
| Set temperature select in increments of 1°C from 150°C to -230°C | | | | | | |
| Higher set points available, contact Thermtrol for details. | | | | | | |

GT20 Series, 1/2" Disc, Moisture Resistant, Fixed Thermostats

DECA Manufacturing offers the GT20 line of 1/2" disc fixed temperature thermostats. Approved by numerous testing agencies, all GT thermostats pass a series of rigorous quality control checks including continuity, function, contact resistance and dielectric strength. Excellent multipurpose thermostat with a moisture resistant body. A wide range of operating temperatures permit the flexibility to meet your needs.

Features

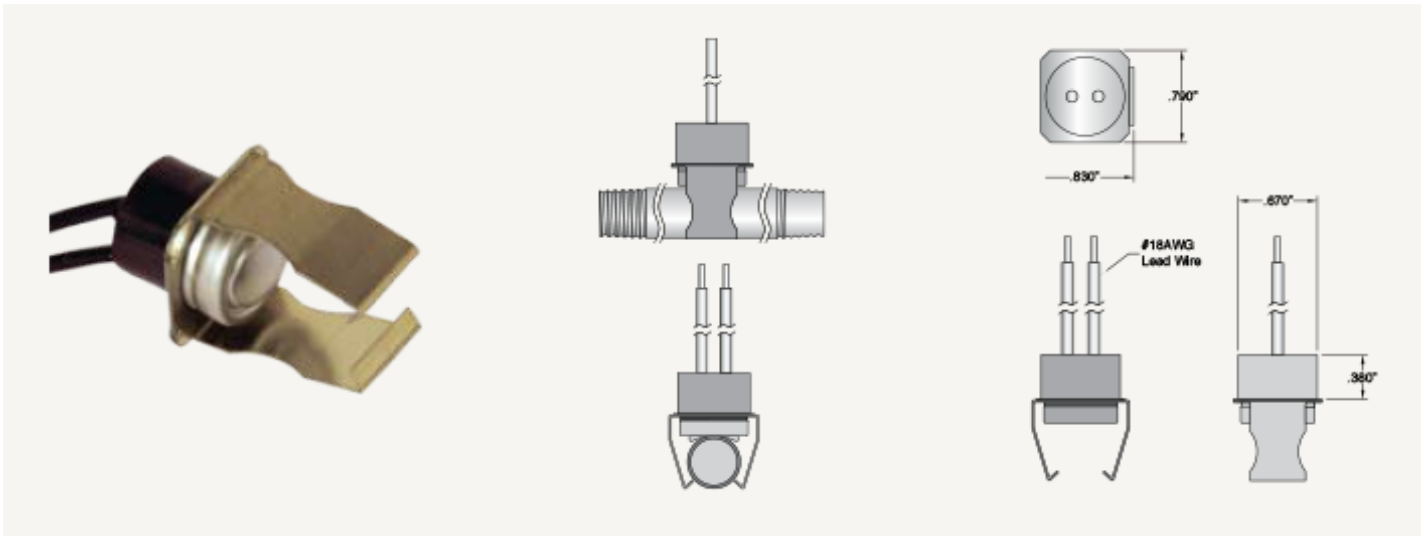
- Bi-metal disc, factory pre-set
- Automatic reset: Available with both normally open and normally closed switch logic
- Variety of accessories and mounting options
- Compact dimensions, high load capacity
- High operating speed
- Current insensitive
- Moisture resistant

Applications

- Hydronic fan coils
- Humidifier
- Dehumidifier
- HVAC
- Major appliances
- Medical/lab equipment
- Vending machines
- Electric space heaters
- Hair care appliances
- Audio speakers
- Copiers
- Refrigeration compressors
- Commercial food equipment
- Vacuum cleaners
- Medical equipment
- Gas furnace protection
- Welding equipment

Auto Reset Construction

Options shown: 1/2" diameter pipe mount. Lead wires.



Electrical Ratings & Temperature Information

| Electrical Ratings and Selected Agency Approvals | | | | | | | |
|--|-----------------|---|--|-----------------|------------|--|--|
| Model Type | Cycles (X 1000) | Electrical Rating | | Max. Temp. (°C) | Agency | | |
| GT20 | 100 | 120 Vac/15 Amps 240 Vac/10 Amps 125 Vac/7.5 Amps IND. | | 80C | UL E201152 | | |

| Standard Temperature Differential and Tolerances: Automatic Reset | | | | | | | |
|---|--------|--------------|----|----------------|--------|-----------------|---------|
| Set Temperature | | Differential | | Open Tolerance | | Close Tolerance | |
| °C | °F | °C | °F | °C | °F | °C | °F |
| 0-80 | 32-176 | 10 | 18 | +/-3 | +/-5.4 | +/-7.0 | +/-13.0 |

Numbering System

GT

20

N

L

W

RE

60

Contact Type

20

Automatic Reset

Contact Material

N

Silver Nickel Alloy

Contact Configuration

L

Normally Closed, Open on Rise

F

Normally Open, Close on Rise

Terminal Options

W

6" #18AGW Black
PVC lead wire.
UL1007

Custom lead lengths available upon request.

Mounting Options

FC

No Mounting Provision, Flat Cup

AM

Airstream Mount Integral Flange

SM

Surface Mount Flange, Loose Ear

ST

8-32 Stud Mount

RM

1/4" - 5/16" OD Pipe Mount

RJ

3/8" OD Pipe Mount

RE

1/2" OD Pipe Mount

RK

5/8" OD Pipe Mount

RL

3/4" - 7/8" OD Pipe Mount

Set temperature select in increments of 1°C from 0°C to 80°C

GT43 Series, Disc Fixed Thermostats

DECA Manufacturing offers the GT43 line of 3/4" disc fixed temperature thermostats. Approved by numerous testing agencies, all GT thermostats pass a series of rigorous quality control checks including continuity function, contact resistance, and dielectric strength. Excellent multipurpose thermostat with increased contact capacity. A wide range of operating temperatures permit the flexibility to meet your needs.

Features

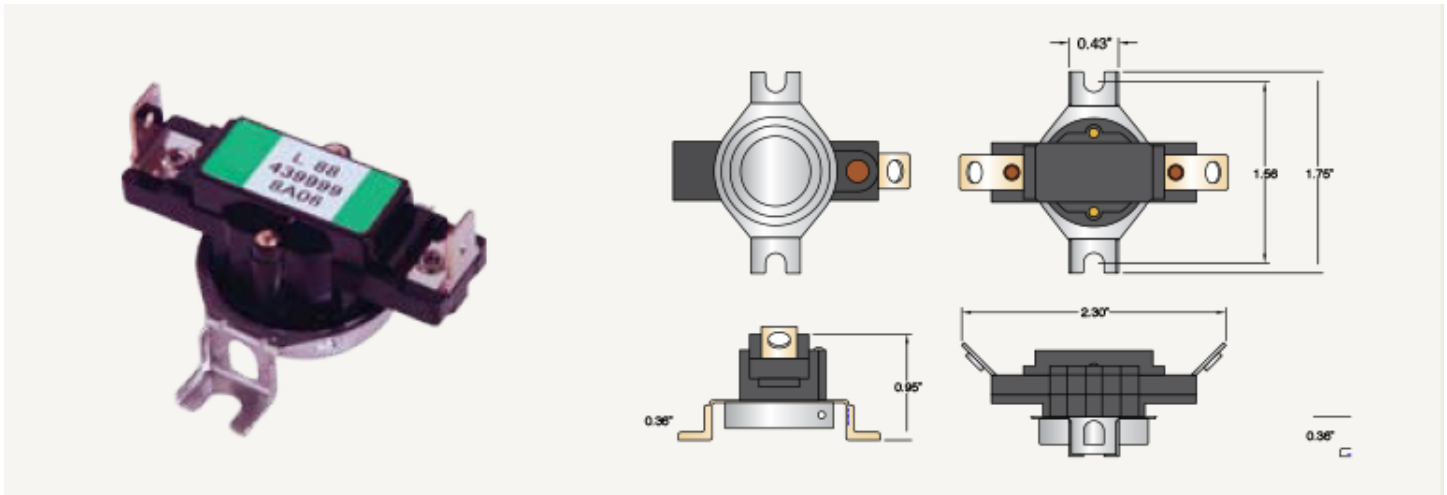
- Bi-metal disc, factory pre-set
- Automatic reset: Available with both normally open and normally closed switch logic
- Variety of accessories and mounting options
- Compact dimensions, high load capacity
- High operating speed
- Current insensitive
- ROHS Compliant

Applications

- HVAC
- Major appliances
- Medical/lab equipment
- Vending machines
- Electric space heaters
- Overhead projectors
- Hair care appliances
- Audio speakers
- Copiers
- Refrigeration compressors
- Commercial food equipment
- Vacuum cleaners
- Medical equipment
- Gas furnace protection
- Power supplies
- Communications equipment
- Welding equipment

Auto Reset Construction

Options shown: Vertical 1/4" Q.C. Terminals and Surface Mount Flange



Electrical Ratings Approvals & Temperature Information

| Electrical Ratings and Selected Agency Approvals | | | | |
|--|-----------------|------------------------------------|-----------------|------------|
| Model Type | Cycles (X 1000) | Electrical Rating | Max. Temp. (°C) | Agency |
| GT43 | 100 | 250 Vac/25 Amps 480 Vac/13 Amps | 150°C | UL E201152 |

| Standard Temperature Differential and Tolerances: Automatic Reset | | | | | | | |
|---|---------|--------------|----|----------------|--------|-----------------|---------|
| Set Temperature | | Differential | | Open Tolerance | | Close Tolerance | |
| °C | °F | °C | °F | °C | °F | °C | °F |
| 0-119 | 32-246 | 10 | 18 | +/-3 | +/-5.4 | +/-7.0 | +/-13.0 |
| 120-150 | 248-302 | 10 | 18 | +/-5 | +/-9 | +/-7.0 | +/-13.0 |

Numbering System

| | | | | | | | |
|------|---|---|---|---|---|-----|----|
| GT43 | 1 | 1 | 3 | 2 | 5 | 090 | 85 |
|------|---|---|---|---|---|-----|----|

| Contact Configuration | |
|-----------------------|-------------------------------|
| 1 | Normally Closed, Open on Rise |
| 2 | Normally Open, Close on Rise |

| Body Material | |
|---------------|----------|
| 1 | Phenolic |

| Cap | |
|-----|--------|
| 0 | Open |
| 3 | Closed |

| Terminal Options | |
|------------------|------------------------------|
| 1 | 1/4" QC Terminal Flat |
| 2 | 1/4" QC Terminal 45 Degrees |
| 3 | 1/4" QC Terminal Vertical |
| 6 | 8-32 Screw Thread Flat |
| 7 | 8-32 Screw Thread 45 Degrees |

| Mounting Options | |
|------------------|-----------------|
| 0 | None |
| 5 | Airstream Mount |
| N | Surface Mount |

| Terminal to Bracket Orientation | |
|---------------------------------|--------------------|
| 000 | 0° from Terminals |
| 045 | 45° from Terminals |
| 090 | 90° from Terminals |

Set temperature select in increments of 1°C from 0°C to 150°C.

Manual Reset version also available.

1NT Series, Fixed Thermostats

DECA Manufacturing offers Sensata's Klaxon® line of 1NT fixed temperature thermostats. Approved by numerous testing agencies, all 1NT thermostats pass a series of rigorous quality control checks including continuity, function, contact resistance and dielectric strength. Excellent multipurpose thermostat available in both automatic reset and push button manual reset configurations. A wide range of operating temperatures, small size, and a variety of physical configurations, permit the flexibility to meet your specific needs.

Features

- Bi-metal disc, factory pre-set
- Switch Actions:
 - Automatic reset: Available with both normally open and normally closed switch logic
 - Manual reset: Mechanically resettable device
 - Trip free manual reset: UL M2 class rating that resists consumer tampering
- Variety of accessories and mounting options
- Compact dimensions, high load capacity
- High operating speed
- Current insensitive

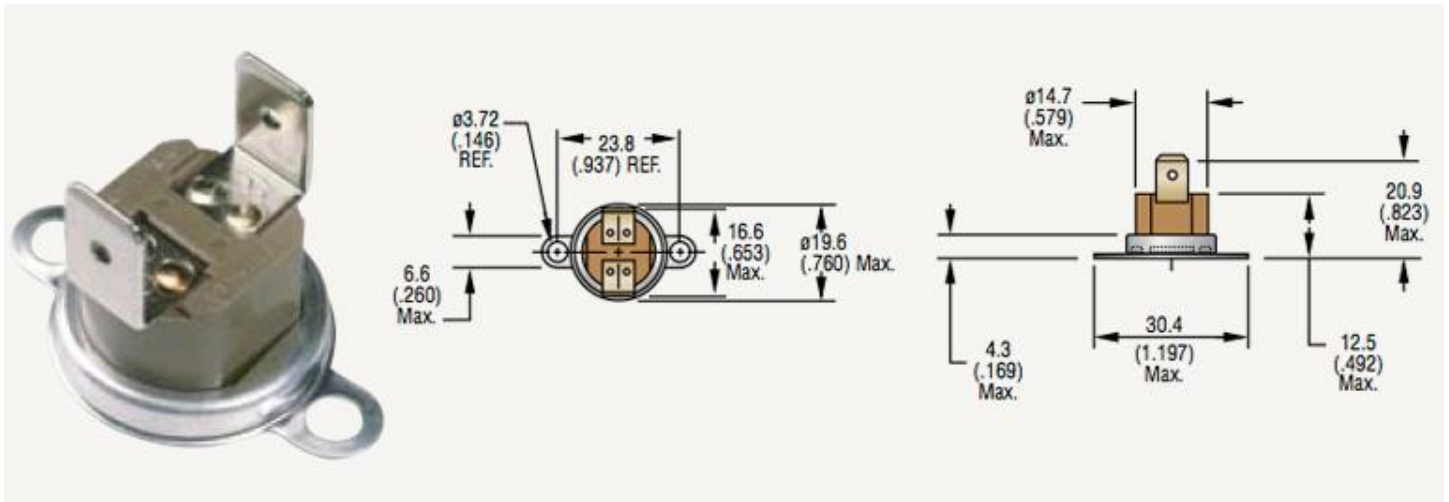
Applications

- Vending machines
- Microwave ovens
- Electric space heaters
- Overhead projectors
- Hair care appliances
- Clothes dryers
- Audio speakers
- Copiers
- Refrigeration compressors
- Food processing equipment
- Toasters
- Coffee makers
- Vacuum cleaners
- Medical equipment
- Dishwashers
- Gas furnace protection
- Power supplies
- Communications equipment
- Welding equipment



Auto Reset Construction

Options shown: Vertical 1/4" Q.C. Terminals and Surface Mount Flange



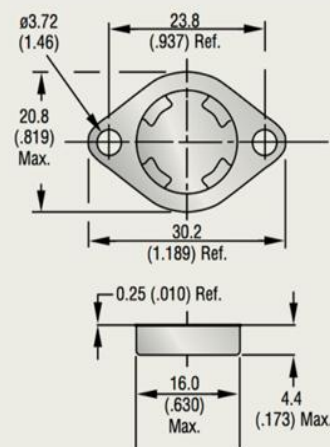
Manual Reset Construction

Options shown: Horizontal 1/4" Q.C. Terminals and Airstream Mount Flange

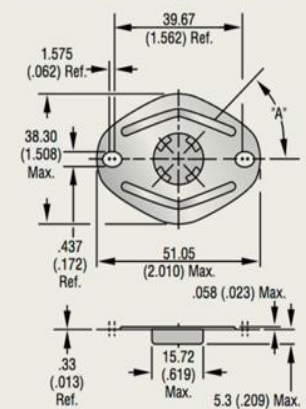


Mounting Options

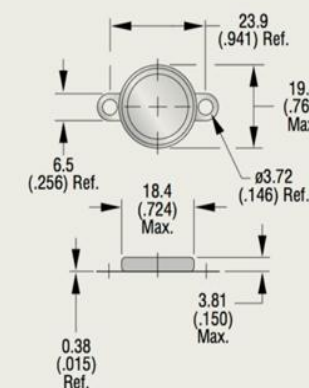
Airstream Mount Flange Cup
Code: AM Material: Aluminum



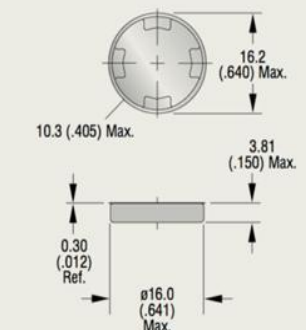
Large Oval Integral Cup
Code: LO Material: Aluminum



Loose Ear Surface Mount Flange
Code: SM Material: Aluminum



Flat Cup
Code: FC Material: Aluminum

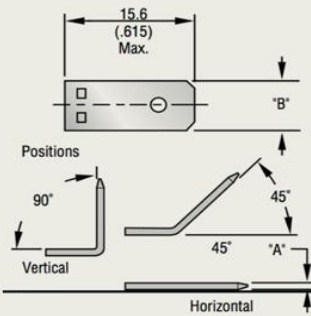


Terminal Options

Quick Connects

Material: Brass, Tin Plated

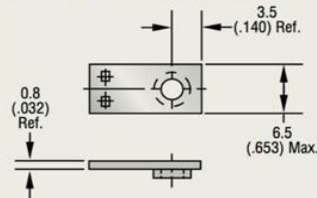
| | 1/4" | 3/16" |
|--------------------|--------------|------------|
| Thickness (A): | 0.8 (.031) | 0.5 (.020) |
| Width (B): | 6.3 (.250) | 4.8 (.187) |
| Orientation | Codes | |
| Vertical | 4V | 3V |
| Horizontal | 4H | 3H |
| 45° | 4A | 3A |



All dimensions mm (in.)

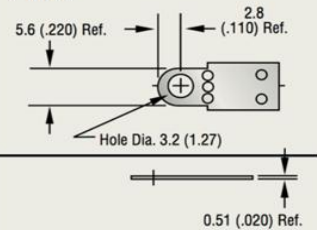
Screw Terminals

Code: SC Material: Steel, Nickel Plated
M3 x 0.5 Class 6H Thread



Solder Terminals

Code: ST Material: Brass, Tin Plated



10A Max. on all terminals 0.5mm (0.020") thick.

Numbering System

| | | | | | |
|-----|----|---|----|----|-------|
| 1NT | 08 | L | 3H | AM | 199°C |
|-----|----|---|----|----|-------|

Contact Type

| | |
|----|----------------------------------|
| 01 | Automatic Reset, Silver Contacts |
| 11 | Automatic Reset, Gold Contacts** |
| 08 | Manual Reset, Silver Contacts |
| 12 | Manual Reset, Gold Contacts** |
| 15 | Trip Free MR*, Silver Contacts |
| 19 | Trip Free MR*, Gold Contacts** |

*MR = Manual Reset

**Gold contacts are applicable for circuits from 50mAMP to 1AMP

Contact Configuration

| | |
|---|-------------------------------|
| L | Normally Closed, Open on Rise |
| F | Normally Open, Close on Rise |

F contacts not applicable for Manual Reset devices.

Mounting Options

| | |
|----|--|
| FC | No Mounting Provision, Flat Cup |
| AM | Airstream Mount Integral Flange |
| SM | Surface Mount Flange, Loose Ear |
| LO | Large Oval Airstream Mount Integral Flange |

Terminal Options

3/16" Quick Connects

| | |
|----|------------|
| 3V | Vertical |
| 3H | Horizontal |
| 3A | 45° |

1/4" Quick Connects

| | |
|----|------------|
| 4V | Vertical |
| 4H | Horizontal |
| 4A | 45° |

Other

| | |
|----|------------------|
| ST | Solder Terminals |
| SC | Screw Terminals |

Other terminal types available.

Set temperature -
select in increments of
1°C from 0°C to 204°C